



**GANESH  
MACHINERY**  
*The Edge in Cutting.*

20869 Plummer St. Chatsworth, CA 91311  
Toll Free: 888-542-6374 (US only)  
Phone: 818-349-9166 | Fax: 818-349-7286  
[www.ganeshmachinery.com](http://www.ganeshmachinery.com)

# **GANESH GTW-34/38/42 CNC Lathes**

**Swing from 34" - 42" - Center Distance from 80" - 240"**  
**Features Both Front and Rear Chuck Mounts**



## **FOR YOUR HEAVY-DUTY CNC TURNING NEEDS**

- **A2-11 Spindle with a 6-5/8" Bore ( 10" & 14" Spindle Bores Optional )**
- **5 – 550 RPM Spindle Speeds (4 - 440 RPM with 14" bore)**
- **3 - Automatically Selected Gear Ranges for High Torque**
- **8-Station Vertical Tool Turret**
- **Rear Spindle Chuck Mount provided for long workpieces**
- **Large Boring Bar Holder Available for back of Cross Slide**
- **FANUC 0i-TD Control & FANUC Alpha Axis & Spindle Drives**

# **GTW- 34/38/42 Series MACHINE FEATURES:**

## **MACHINE CONSTRUCTION**

- Meehanite Castings, fine grain and high-density cast iron using the superior Meehanite process yields superior vibration dampening and improved surface finish and tool life, as well as greater wear resistance on the ground way surfaces of this heavy-duty CNC lathe.
- Precision C-5 double-nut ballscrews ensure accuracy in repeatability and positioning

## **SPINDLE**

- Front and rear chuck mounts are provided for "Oil-Field" type work
- 30-HP heavy-duty spindle motor for high metal removal efficiency Infinitely variable spindle speeds from 5 - 550 rpm in 3-automatic gear ranges
- Hardened and ground A2-11 spindle nose (A2-15 & A2-20 spindles are optional)
- Alloy Steel Hardened & Precision Ground Gears provide for smooth power transmission
- Spindle with 6-5/8" bore (10" & 14" available) is supported by over sized precision bearings
- 3 bearing support, 2x NSK 32040 tapered roller bearings, & 6038 rear ball bearing

## **WAYS**

- Turcite-B anti-friction coating on saddle and cross slide for improved accuracy & wear
- Automatic metered lubrication system for ballscrews and ways
- Hardened & Precision Ground Longitudinal Single-Vee Prism & Box Way for high rigidity
- Cross slide is a dovetail way design

## **TAILSTOCK**

- MT-6 quill taper, (integral bearing style and tailstock chuck style available)

## **FEATURES**

- Automatic vertical turrets and horizontal automatic 4-way toolpost available
- Dual Link-Belt style chip conveyors included for front and backside of bedways
- Inch/Metric threading, left or right hand threading, single or multiple-start threading
- Rear chuck mount with chuck guard provided for operational flexibility
- Built in high-capacity coolant system
- Large Fluorescent worklight
- Heat exchanger for electrical cabinet
- Inspection Report on accuracy to CNS 94 and B7001 standards included
- Instruction Manual, Tools and Tool Box with hand tools and lube gun included

# GTW- 34/38/42 Series MACHINE SPECIFICATIONS:

## MACHINE SPECIFICATIONS:

## GTW-34/38/42 CNC Lathe Series

### **Capacity & Dimensions-**

Swing over Bed	34-1/4"	(870mm) 42" available
Swing over Cross Slide	20"	(510mm) 28" available
Center Height	17-5/8"	450mm) 21.6" available
Distance between centers	78"- 236" available	(2000 – 6000mm)
Bed Width	22"	(560mm)

### **Spindle Weight Capacity-**

Workpiece weight limit when held in chuck only	2,200 lbs (1,000kgs)	(10"=9922 lbs. / 4,500kgs)
Workpiece weight limit when held in chuck & tailstock	11,020 lbs (5,000kgs)	(10"=18,742 lbs. / 8,500kgs)
Workpiece weight limit using chuck, steadyrest & tailstock	15,430 lbs (7,000kgs)	(10"=23,150 lbs. / 10,500kgs)

### **Spindle-**

Spindle Motor Horsepower – Fanuc 22kW	40-HP Peak Power – (30-HP 30-minute duty rating)
Spindle speeds (Low = 5-50, High = 50-550)	5-550 rpm (4-400 with 14" spindle bore)
Spindle speed gear ranges, <u>automatically selected</u>	3-gear ranges (infinitely variable speeds in each range)
Spindle Bore	6-5/8" (170mm) (Optional 10" and 14" Available)
Spindle Nose	A2-11 (Optional A2-15, 255mm bore / A2-20, 355mm bore)
Spindle ID taper in spindle nose	MT-6

### **Axis-**

Cross slide travel	21.65"	(550mm)
Cross slide surface dimensions WxL	13" x 39-3/8"	(330mm x 1000mm)
X axis Ballscrew / Servo Motor	40mm, Pitch 8mm / 4-HP (3kw) Servo motor	
Z axis Ballscrew / Servo Motor	63mm, Pitch 10mm / 5.4-HP (4kw) Servo motor	
X and Z axis Rapid Feed Rate	240"/min	(6,000 mm/min)
X and Z axis Cutting Feed Rate	120"/ min	(3,000 mm/min)
Minimum input unit	0.0001" (0.001mm = 40 millionths of an inch)	

### **Tool Turret -**

Turret Tool Stations	8-Station tool turret with any mix of ID & OD tools
Turret Index Time	0.4 seconds Station-to-Station (adjacent)
OD Tool Size (8-O.D. Tool Wedges included)	1.25" X 1.25", (32mm X 32mm)
ID Tool Holder Bore (4-ID toolholders included)	2" standard (50mm optional)

### **Tailstock-**

Quill diameter	6.5"	(165mm)
Quill stroke	9.8"	(250 mm)
Quill taper	MT-6	Morse Taper #6
Body movement	Hydraulic Motor Driven w/ Hydraulic Clamping	

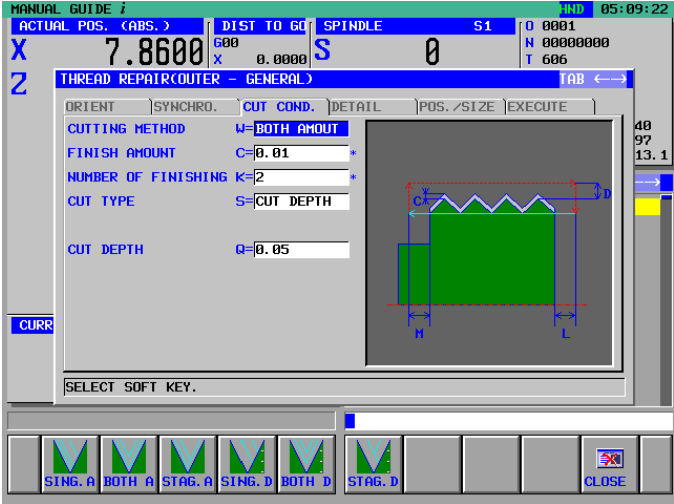
### **Specifications-**

Hydraulic system	5-HP (3.7kw) pump
Coolant pump	3/4-HP
Electrical – FANUC 0i-TD control, motors, & drives	220vac ±5%,

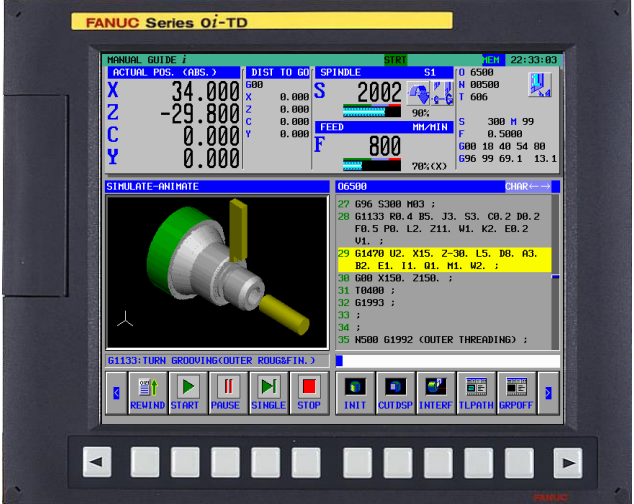
**The Ganesh GTW-34-38-42 series of CNC machines are manufactured  
in our Certified ISO 9001 Production Facility in Taiwan.**



The **FANUC Oi-TD** all digital control and drive package provides exceptional value and reliability. The control features a clear 10.4" LCD screen that pivots out for easy operator viewing, and can catalog 400 part program numbers and features an internal 2GB solid-state Data Server with 512K RAM memory reserved for part programs. The control features embedded high-speed Ethernet capability and AICC II and includes DB-25 RS-232 serial interface, RJ-45 Ethernet interface, USB, and PC MCIA CF memory card connections for program transfer. Manual Guide-i conversational programming provides fast & efficient intuitive menu driven shop floor programming and includes a Thread Repair Cycle. A MPG handwheel is also provided. There is a heat exchanger on the electrical cabinet to control the ambient temperature of the electronic hardware.



Thread Repair Cycle

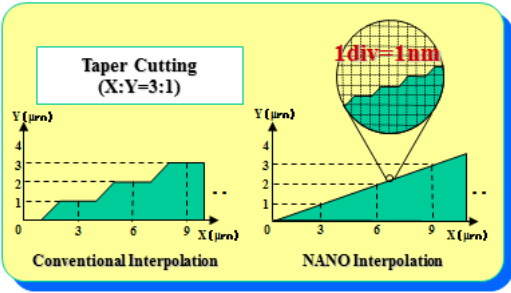


Manual Guide-i

Smooth machined surface achieved in combination with high-speed, high-precise Servo control

**Feature**

- Position command to servo control is calculated in much finer resolution than input unit (1nm for input unit of 1μm).
- Machine movement becomes very smooth resulting in high accuracy of finished surface.
- More smooth machined surface is obtained for combined use with *ai*servo.



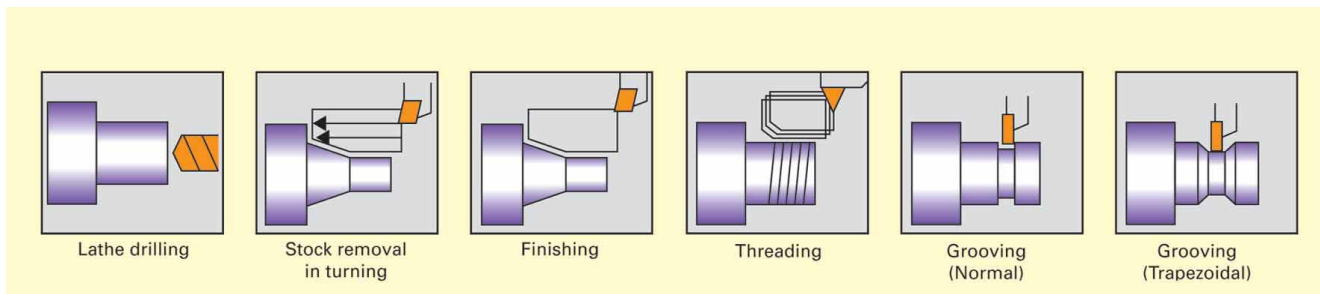
The Series 0i-MODEL TD achieves the highest precision possible with nanometer resolution standard throughout the CNC system - from internal calculations and stored values, through to the interpolator, on to the drive system, and the position feedback devices.

Nano interpolation and fast, high resolution 16-million count-per-revolution feedback devices combine to provide a superior surface finish quality when contouring. This minimizes the need for secondary operations, reducing delivery times and part cost.

The 0i-TD CNC includes many high performance features and functions to make you more productive and help you achieve the highest accuracy possible. The graphics below show some of the capability of the FANUC 0i-TD CNC Control.

### Advanced Graphical Canned Cycles:

For easy lathe programming, MANUAL GUIDE-i features numerous canned cycles. The operator simply fills the required fields on the screen and the program is created automatically for the ultimate shop floor efficiency.



### Productivity Advantages:

- Compatibility with previous versions Series 0 and 0i-Models A, B and C
- Make use of existing part programs
- Thread Repair Cycle
- Stored Pitch error compensation for each axis
- 400 Program storage with 512K of user memory
- Background editing
- Simple programming and operation
- Minimal training required
- Operator friendly graphic display for part program verification
- Multi-Language Support
- Extended help functions and alarm/operation history
- 64-Tool Offset Pairs
- Tool Life Management to maximize machine utilization
- Cutter Compensation for direct input from drawings
- Ethernet RJ-45, RS-232, USB interfaces
- Standard Nano-Interpolation and advanced functions like AI Contour Control (AICC-1) provide enhanced surface finish results and exacting feature definition

The suite of Canned Cycles and Custom Macro-B further simplify part programming.

**Prices and specifications subject to change without prior notice.**