



**GANESH  
MACHINERY**  
*The Edge in Cutting.*

20869 Plummer St. Chatsworth, CA 91311  
Toll Free: 888-542-6374 (US only)  
Phone: 818-349-9166 | Fax: 818-349-7286  
[www.ganeshmachinery.com](http://www.ganeshmachinery.com)

# **GANESH GMV-3 CNC**

## **2 & 3 Axis CNC Milling Machines**



- **FAGOR 8055 MC CNC Teach Control**
- **Full CNC Capability - No CNC Experience Required**
- **Full Manual Capability with Teach-In-Playback Capability**
- **10" x 54" Table Hardened & Ground Table**
- **Box Ways on Saddle for Superior Cutting Rigidity**
- **Tilt Head Solutions Available for Angle Work**
- **5-HP Motor w/ 60-4200 RPM Spindle Speeds (6,000 RPM Optional)**
- **Features Class-7 Super Precision Fafnir Spindle Bearings**
- **Precision Double-Nut Preloaded Ballscrews**
- **Spring Loaded Way Covers for Saddle and Column Protection**
- **Knee Power Feed & Hard-Chrome Plated Quill**

## STANDARD MACHINE FEATURES:

### CONSTRUCTION –

- Meehanite Castings, fine grain and high density cast iron using the superior Meehanite Process yields superior vibration dampening and improved surface finish and tool life
- Built-in leveling ledge to level machine low to ground for maximum stability
- Precision preloaded zero-backlash ball screws in the X & Y axis
- Multiple knee and table locks for higher rigidity

### SPINDLE –

- 5-HP Spindle Motor for superior metal removal capability
- Dual Range Variable Speed Spindle - 60 - 500 rpm (low-range) / 500 - 4200 rpm (high-range)
- Fafnir Class-7 *Super Precision* spindle bearings (Made in England)
- Spindle Runout 0.0002" maximum – guaranteed! (R8 spindle)
- Forward/ Reverse switch mounted in a water tight switch box
- Hardened, ground and polished precision Back Gear
- 6,000 RPM Spindle available w/ an optional AC Inverter Spindle Head
- Two fans on spindle motor to provide extra head cooling for a long service life

### Quill –

- Power quill feed with 3-feeds and adjustable feed stop & automatic feed trip release
- Hardened and Ground Quill – **Hard chrome plated** for a long service life
- Quill return spring (Made in USA)

### BEDWAYS –

- Turcite-B Premium *Red Furon* Coated way surfaces (Made in USA)
- Hardened and Ground Square Box Sideways for Column and Knee
- Hardened and Ground Table and dovetail longitudinal slideway
- Hardened and Ground Quill – Hard chrome plated for long service life

### FEATURES –

- Conversational CNC Control with help menus for ease of use
- Hi -Torque 1.5-HP knee power feed included to enhance operator efficiency
- Multiple knee and table locks for superior rigidity
- Table T-slots ground to 5/8" to fit standard workholding nuts
- Automatic Metered Lubrication for all slideways and ballscrews
- Spring Loaded way covers for saddle & knee included for added safety and protection
- Built-in coolant pump
- Coolant & Chip-Tray included
- Water resistant halogen lamp is included
- Inspection Report on accuracy, Instruction Manual, Tools and Tool Box all included
- Large compliment of parts and accessories in stock to ensure continued operation

**CNC KNEE MILLS PROVIDE THE FLEXIBILITY FOR EASY SETUPS  
AND QUICK CHANGEOVER THAT CAN'T BE ACHIEVED WITH BED MILLS OR VMC's.  
GANESH CNC PLUS MILLS ARE THE BEST TOOLROOM SOLUTION!  
INCREASE YOUR EFFICIENCY AND PRODUCTIVITY!!**

## **STANDARD GANESH GMV-3 CNC SPECIFICATIONS:**

### **TABLE –**

|  |   |
|--|---|
| <b>Table Size:</b>                     | 10" X 54" (254mm X 1372mm)                |
| <b>T-slot width (3 Ground T-Slots)</b> | 5/8" ground reference edges (15.9mm wide) |

### **MACHINE TRAVELS & CAPACITY –**

Travel may be reduced by CNC limit switches!

|  |   |
|--|---|
| <b>Table Travel under CNC Control / X-Axis</b> | 33.5" (850mm)   |
| <b>Cross Travel - Saddle / Y-Axis</b>          | 16" (400mm)   |
| <b>Ram Travel</b>                              | 17.7" (450mm)   |
| <b>Knee Travel</b>                             | 16" (406mm)   |
| <b>Spindle Nose-to-Table Surface Travel</b>    | 2" – 18" (50 - 457mm)                                   |
| <b>Quill Travel – CNC Z-Axis</b>               | 5" (127mm) Manual & Power Feed w/o 3 <sup>rd</sup> axis |
| <b>Quill feeds – With Trip Release</b>         | 0.0015", 0.003", 0.006" (0.038mm, 0.076mm, 0.152mm)     |
| <b>Quill Diameter</b>                          | 3-3/8" (85.725mm)                                       |
| <b>Ballscrew ground pitch (X &amp; Y)</b>      | 200" per rev.   |
| <b>Adjustable scale ring resolution</b>        | 0.001" (5mm)  |
| <b>Ways – Hardened &amp; Ground</b>            | Dovetail Ways in X & Z axis<br>Square Box Way in Y-axis |

### **SPINDLE HEAD –**

|  |  |
|--|--|
| <b>Spindle Motor</b>                     | 5-HP, 3-Phase 208–240 vac                              |
| <b>Spindle Taper</b>                     | R-8 (#30-taper & #40-taper optional)                   |
| <b>Spindle Runout</b>                    | 0.0002" maximum runout (0.005mm)                       |
| <b>Spindle Bearings</b>                  | Fafnir ABEC-7 matched set Class-7 bearings             |
| <b>Variable Speed Drive - Dual Range</b> | 60 - 500 rpm (low-range) / 500 - 4200 rpm (high-range) |

**Note:** 6,000-RPM Spindle available w/ the optional AC Inverter Spindle Head

|  |                     |
|--|---------------------|
| <b>Head tilt (Left-to-Right)</b>           | 90 – 0 – 90 degrees |
| <b>Head tilt (Front-to-Back / Up-Down)</b> | 45 – 0 – 45 degrees |
| <b>Head Swivel</b>                         | 360-degrees         |

### **DIMENSIONS & WEIGHT –**

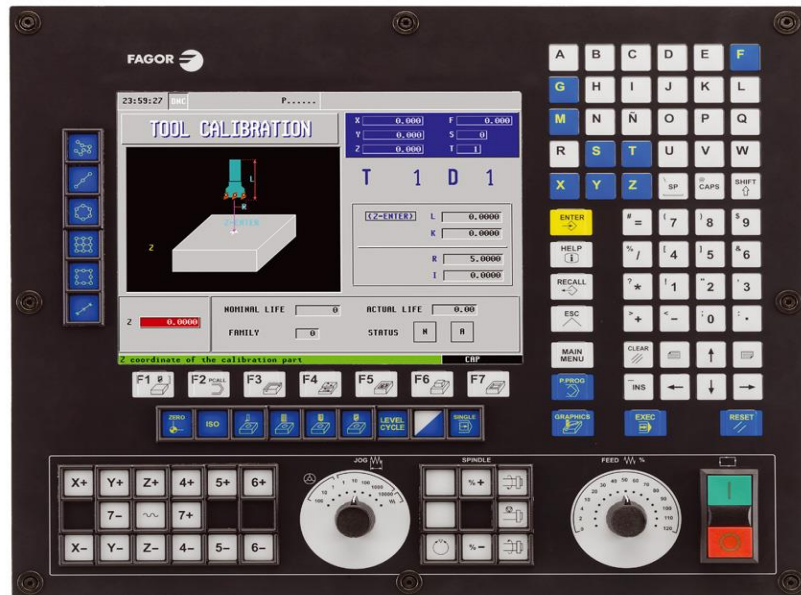
|                           |                                       |
|---------------------------|---------------------------------------|
| <b>Power Requirements</b> | 208-220vac, 21 amps (440vac optional) |
| <b>Coolant Capacity</b>   | 8-Gallons (30 liters)                 |
| <b>Machine Weight</b>     | 3482 lbs. (1600 Kgs)                  |

**The Ganesh GMV-3 CNC is manufactured in our  
Certified ISO 9002 Production Facility in TAIWAN.**

# FAGOR 8055MC CNC CONTROLLER – 4<sup>th</sup> AXIS CAPABLE

The Fagor 8055 MC Control System is perhaps the most versatile CNC in existence due to its Dual Operating System. In one mode, it is a very powerful ISO G-code control System and, in the other mode, it features **Icon conversational programming with highly interactive graphics**, which make even complex tasks easy to program - **regardless of the operators experience level**.

No prior CNC programming knowledge is required to operate this control.

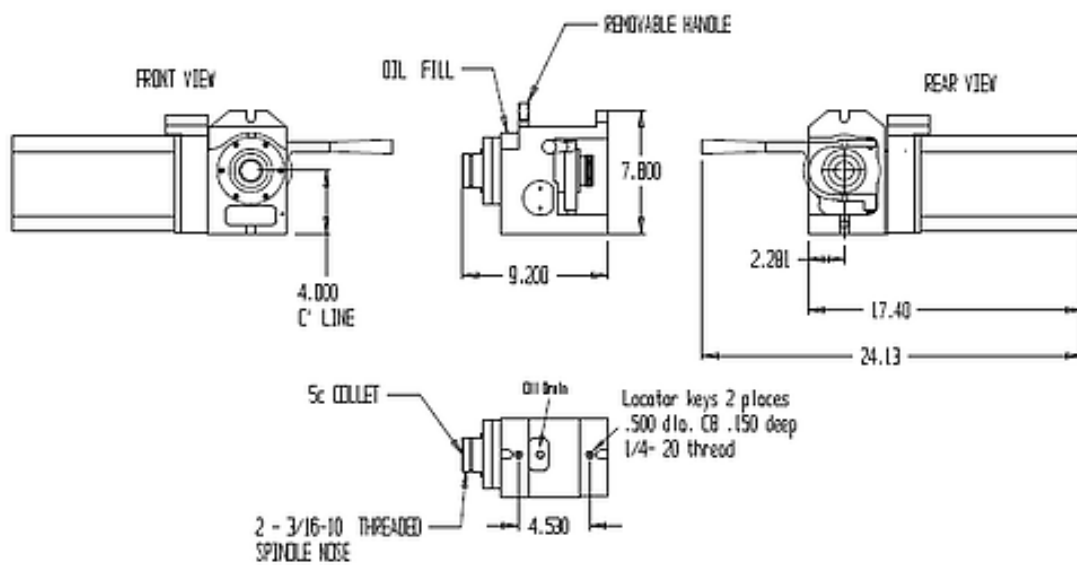


## **Fagor CNC 8055 MC Control System**

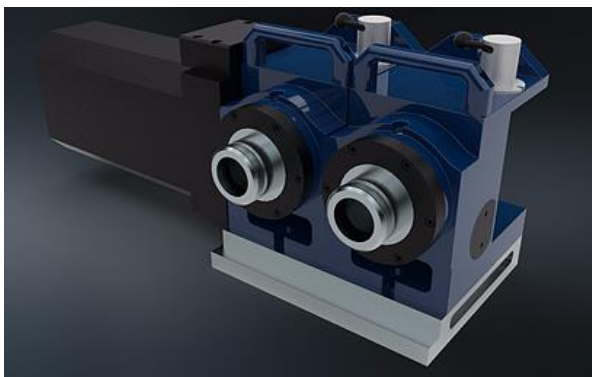
- **Icon Conversational Programming – 26 High-Performance Canned Cycles**  
Rectangular Boss cycle, Round Boss cycle, Rectangular Pocket cycle, Circular Pocket cycles, Profile Pocket 2D & 3D cycles, Slot Milling, Profile Milling, Multiple Drilling cycles, Boring cycles, Reaming cycles, Arc bolt hole cycles, Random position cycles, Grid Pattern position cycles.
- 4-axis CNC + spindle all under full CNC control
- 4-axis simultaneous interpolation with full Linear, Circular and **Helical Interpolation**
- Fagor Intelligent Profile Editor (**mini CAD/CAM**)
- Tool Radius, Tool Length, Tool Wear compensation, 255-sets
- Simulation mode, dry run mode, and Solid 3D Graphics Display with zoom feature
- 10.4" High Resolution LCD color monitor
- Jog Mode & MDI Mode
- Tool offset and Work Coordinate Zero offset tables
- G-code Programming and Editing (on-line with interactive editor), plus M-codes
- WIN DNC offline software program
- Ballscrew pitch & backlash compensation
- Tele-diagnosis: Remote Instant Service capability through modem. (optional)
- Front-mounted USB port for program transfer (standard), Ethernet TCP/IP (optional)

## Index Designs - 5C Indexer Specifications - Made in Chatsworth, CA USA

|                          |          |                               |
|--------------------------|----------|-------------------------------|
| Collet Size              | Inch     | Standard 5C - 1/64" – 1-1/16" |
| Threaded Nose            | Inch     | 2-3/16" x 10 TPI              |
| Maximum Developed Torque | Ft/ Lbs. | 88 ft.-lbs.                   |
| Backlash                 | Arc-sec  | 30 arc-seconds                |
| Center Height            | Inch     | 4.0" ±.001"                   |
| Gear Ratio               |          | 60:1                          |
| Clamp Method             |          | Manual or Pneumatic           |
| Indexing Accuracy        | Arc-sec. | ±25 arc-sec                   |
| Repeatability            | Arc-sec. | ±2 arc-sec                    |
| Maximum Run-out          | Inch     | .0004"                        |
| Weight                   | Pounds   | 50 lbs.                       |
|                          |          |                               |

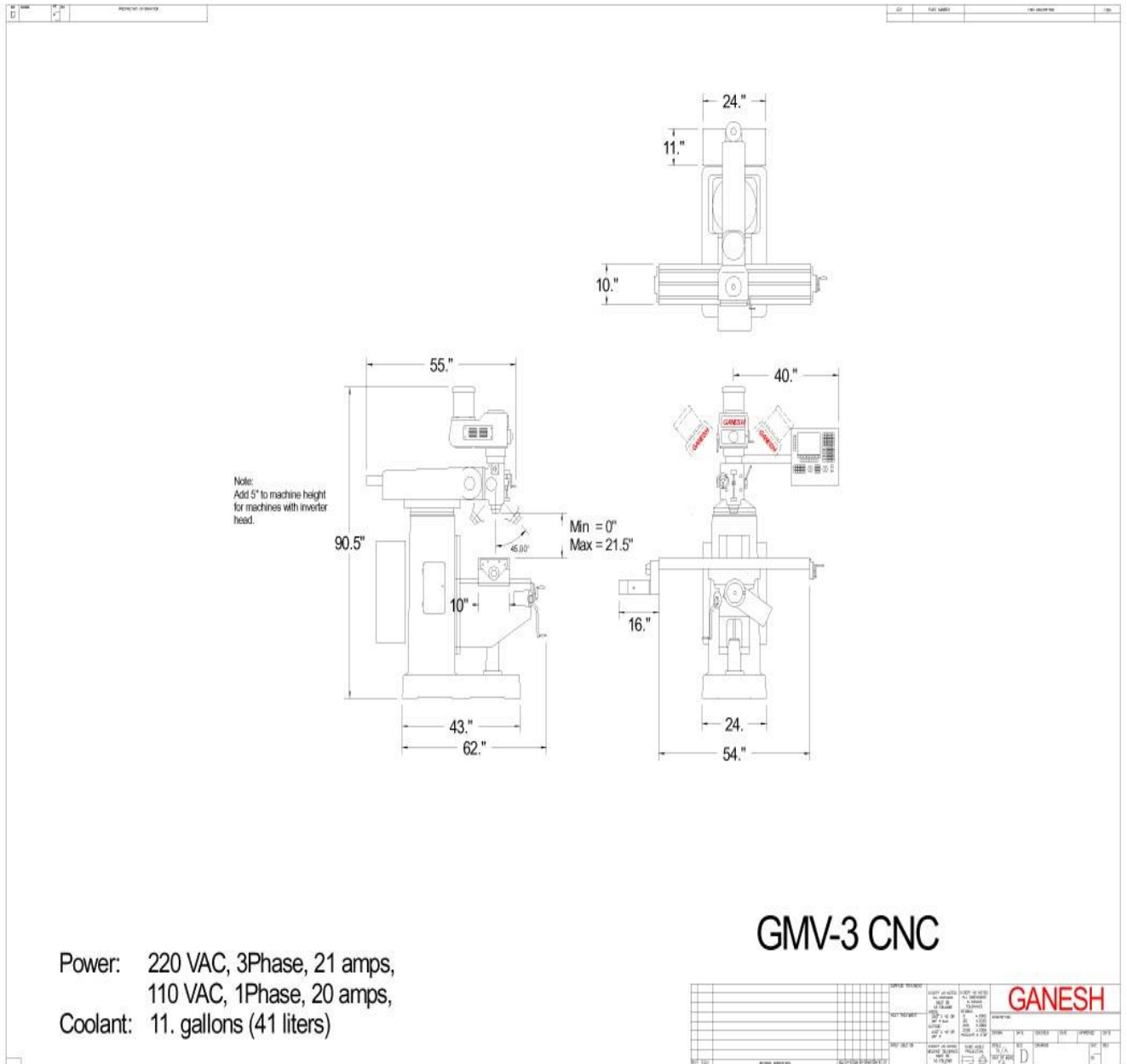


5c ROTARY WITH MANUAL COLLET CLOSER



*The value approach to rotary axis work.  
Ideal for slotting, milling, and drilling jobs with bolt-hole patterns*

# FLOOR PLAN LAYOUT



**Prices and specifications subject to change without prior notice.**